

CleanWIPE® Wipers








cleaning critical surfaces



Description

CleanWIPE® is constructed from an open-cell, ester-based polyurethane medical grade foam and is completely free of fibers. CleanWIPE's® super fine pore structure and proprietary surface chemistry enable high volumes of disinfectant/cleaners to be evenly applied to clean room surfaces. CleanWIPE® is laundered with a proprietary process yielding a Class 100 wiper that is ideal for Medical Device and Pharmaceutical applications. Versions are available that are certified as non-cytotoxic. CleanWIPE® is compatible with ETO, Gamma and autoclave sterilization processes.

Application Advantages

-  **Fiber-Free.** Open-cell polyurethane structure allows for fiber-free wiping.
-  **Improve Disinfection.** CleanWIPE's® uniform, super fine pore structure evenly apply alcohol, aldehyde, bleach, phenolic and quat-based disinfectants.
-  **Non-cytotoxic.** Available certified non-cytotoxic and lot traceable to comply with FDA standard for the Medical Device industry.
-  **Chemically compatible.** Will not interfere with curing of elastomers, platinum-cured silicones, adhesives and will not deactivate disinfectants.
-  **Cleaning ease.** Sponge-like characteristic allow precise application of cleaning solutions to hard to clean areas such as isolators, conveyors and filling machines.
-  **Cost effective and environmentally safe.** Efficient release of sterile alcohol and disinfectants enable reduced usage without reducing sanitization of aseptic surfaces.
-  **Available in small sizes.** Reduced cost in applications such as catheter wipedown.

Cleanliness

All of the below are tested via standard IEST methods.

Particle Generation (0.5µ)

Wet Test (millions/m²)

≤ 11

Dry Flex (particles/ft³)

≤ 120

Absorbency (ml/m²)

Isopropyl Alcohol

≥ 1020

Time to 1/2 Absorption (seconds)

≤ 3

Extractables (g/m²)

Deionized Water

≤ 0.9

Isopropyl Alcohol

≤ 2.0

1,1,1-TCE

≤ 2.5

Freon

≤ 1.8

Ion Count of Extractables (PPM)

Na+

≤ 15

K+

≤ 2

Cl-

≤ 5

Cytotoxicity - MEM Elution Method

PASS: Non-Cytotoxic



**Foamtec
International**

Wiltshire Contamination Control Division

www.foamtecintlwcc.com

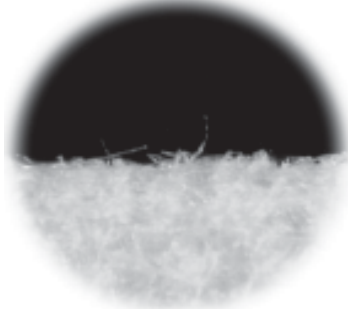
Rev. G

USA +1.866.922.7160 +1.760.599.7160 fax +1.760.599.7322 Thailand +66.3531.4000 fax +66.3531.4007

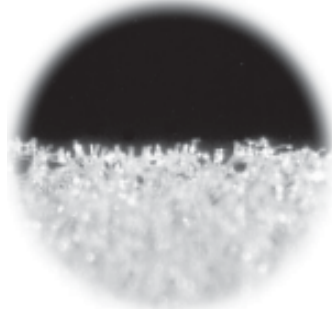
Abrasive Study



*CleanWIPE® Wiper
Out-of-the-Bag*



*Poly/Cellulose
Non Woven Wiper
Out-of-the-Bag*

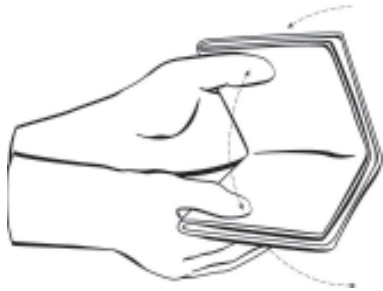


*CleanWIPE® Wiper After
Routine Wiping*



*Poly/Cellulose
Non Woven Wiper
After Routine Wiping*

Method of Use



Step 1: Quarter-fold Wiper *after* wetting with DI Water. For use with IPA, quarter-fold *prior* to wetting.



Step 2: With all four fingers on top and the thumb on the underside of the Wiper, pull it across the desired surface using very light pressure.



Part Numbers

<u>Part No.</u>	<u>Measurements</u>	<u>Bag Qty</u>	<u>Case Qty</u>
HT4201	.078" x 6" x 9"	25/bag	130 bags/case
HT4203	.109" x 6" x 9"	25/bag	40 bags/case
HT4208	.109" x 8" x 9"	10/bag	120 bags/case
HT4211	.078" x 9" x 10"	10/bag	150 bags/case
HT4212	.125" x 9" x 10"	25/bag	50 bags/case
HT4231	.109" x 12" x 12"	25/bag	25 bags/case
HT4232	.50" x 2" x 3"	24/bag	50 bags/case
HT4233	.25" x 3" x 3"	100/bag	10 bags/case
HT4234	.375" x 3" x 4"	100/bag	10 bags/case
HT4236	.109" x 3" x 5"	100/bag	10 bags/case
HT4266	.109" x 6" x 6"	25/bag	100 bags/case